



**IN FAIR PARK**

a State Fair of Texas project

# Implementation planning

**SUBMITTAL - 06**

*Submitted: 05 April 2012*



**Kaser design**

M. Kaser & Associates, Inc.  
217 S. MacArthur Blvd.  
Coppell, Texas 75019  
ph: (469) 549-1832





#### **SHEET SCHEDULE**

- 01 - Logo
- 02 - Site Plan
- 03 - Computer Study Model
- 04 - North & South Entry
- 05 - Area Plan Detail
- 06 - Hammock Area
- 07 - Golf Area, System Approach
- 08 - Golf Area, Custom Course
- 09 - Golf Area, Chip & Putt
- 10 - Water Bucket
- 11 - Water Walk
- 12 - Dunk Tank
- 13 - Ice Cream, Style A
- 14 - Ice Cream, Style B
- 15 - Side Walk Chalk Area
- 16 - Beach Blvd.
- 17 - Retro Billboards
- 18 - Arcade Game Area
- 19 - Giant Game Area
- 20 - Crooked House Interiors
- 21 - Crooked House Interiors
- 22 - Lego Sculpture
- 23 - Sunscreen Station
- 24 - Barrier Graphics
- 25 - Notes



Project

IMPLEMENTATION  
PLANNING

DESIGN  
DEVELOPMENT  
PACKAGE



**Kaser design**  
M. Kaser & Associates, Inc.  
217 S. MacArthur Blvd.  
Coppell, Texas 75019  
ph: (469) 549-1832



Submitted:

05 April 2012

LOGO

DRAWN BY:

MK

SCALE:

SHEET NUMBER:

01





Project

IMPLEMENTATION  
PLANNING

DESIGN  
DEVELOPMENT  
PACKAGE



**Kaser design**  
M. Kaser & Associates, Inc.  
217 S. MacArthur Blvd.  
Coppell, Texas 75019  
ph: (469) 549-1832



Submitted:

05 April 2012

**SITE PLAN**

DRAWN BY: \_\_\_\_\_  
MK

SCALE: \_\_\_\_\_

SHEET NUMBER: \_\_\_\_\_

**02**









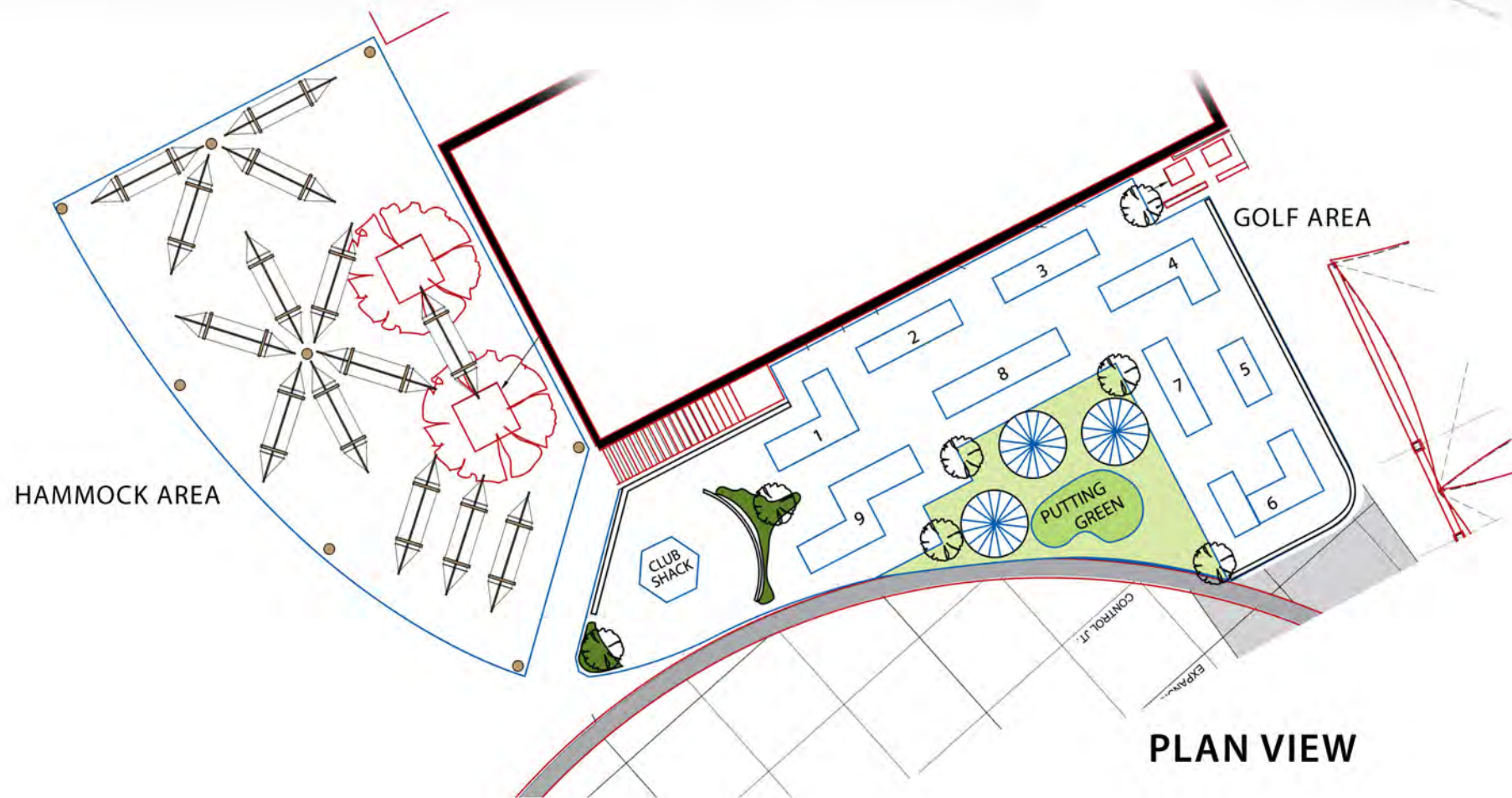


MLK SOUTH ENTRY



NORTH ENTRY





**PLAN VIEW**



Project

**IMPLEMENTATION  
PLANNING**

**DESIGN  
DEVELOPMENT  
PACKAGE**



**Kaser design**

M. Kaser & Associates, Inc.  
217 S. MacArthur Blvd.  
Coppell, Texas 75019  
ph: (469) 549-1832



Submitted:

05 April 2012

**HAMMOCK  
&  
GOLF AREA**

DRAWN BY:

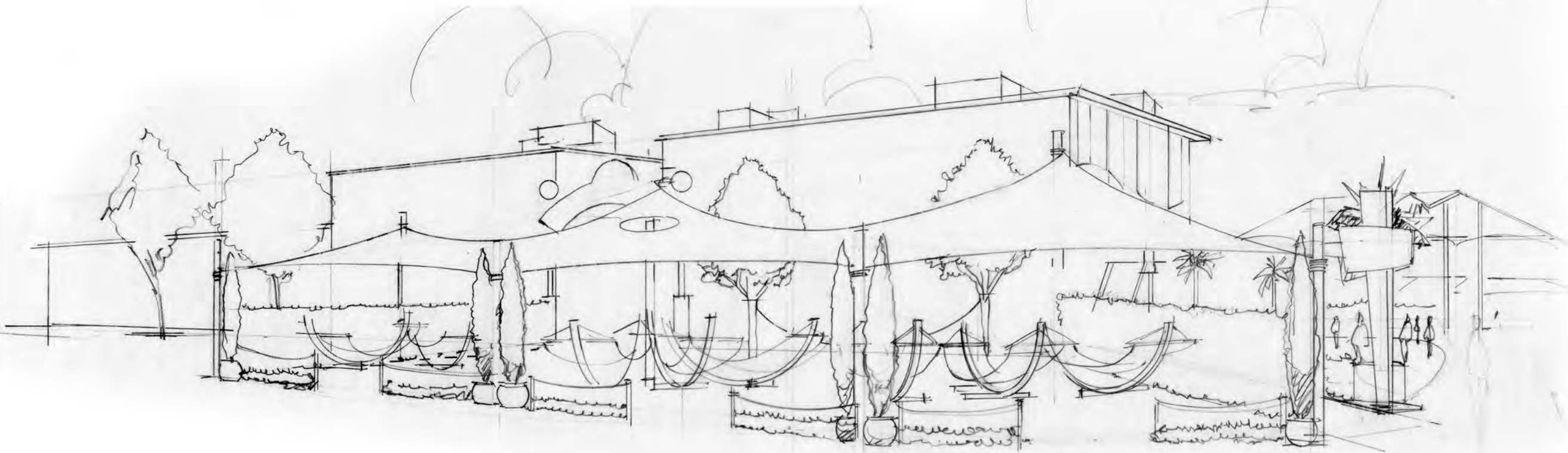
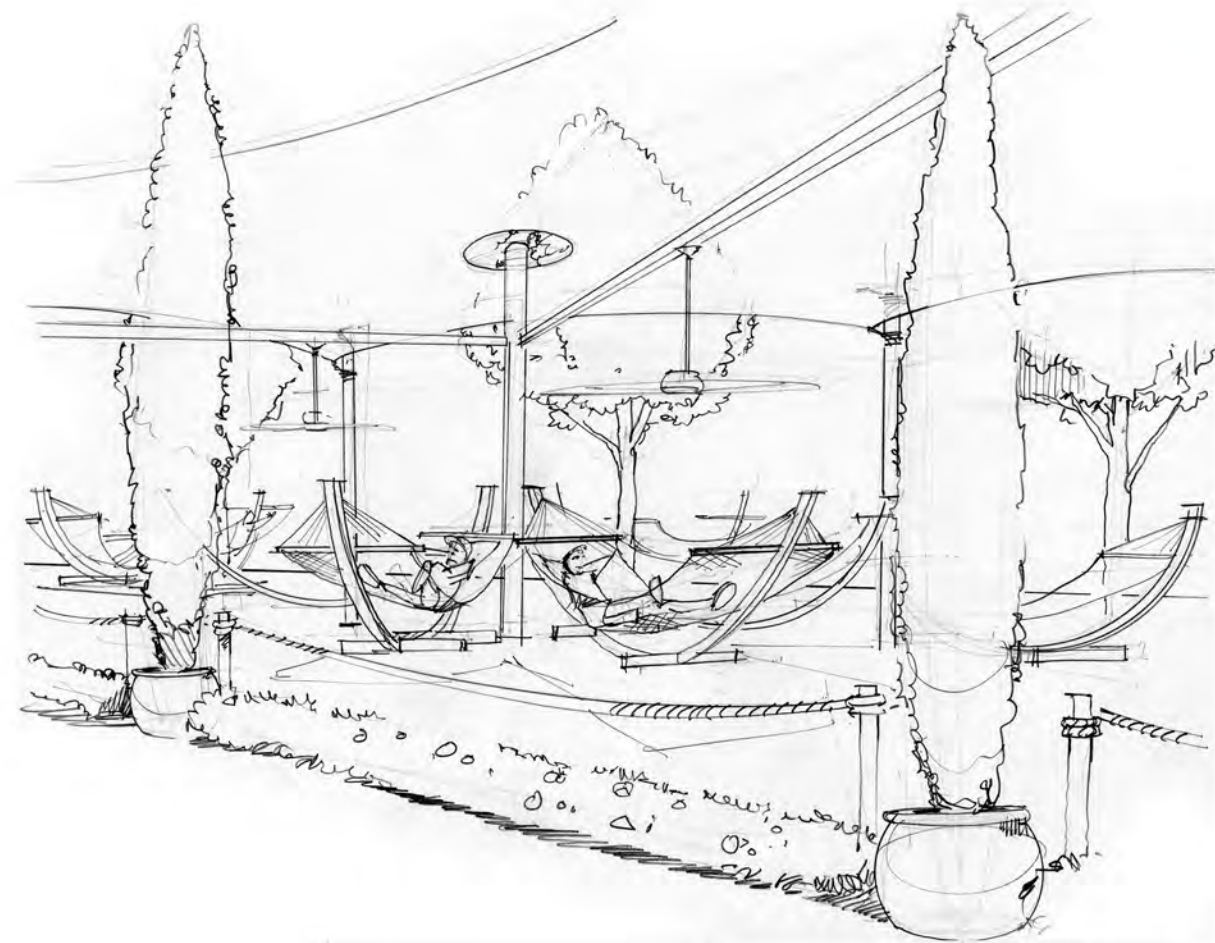
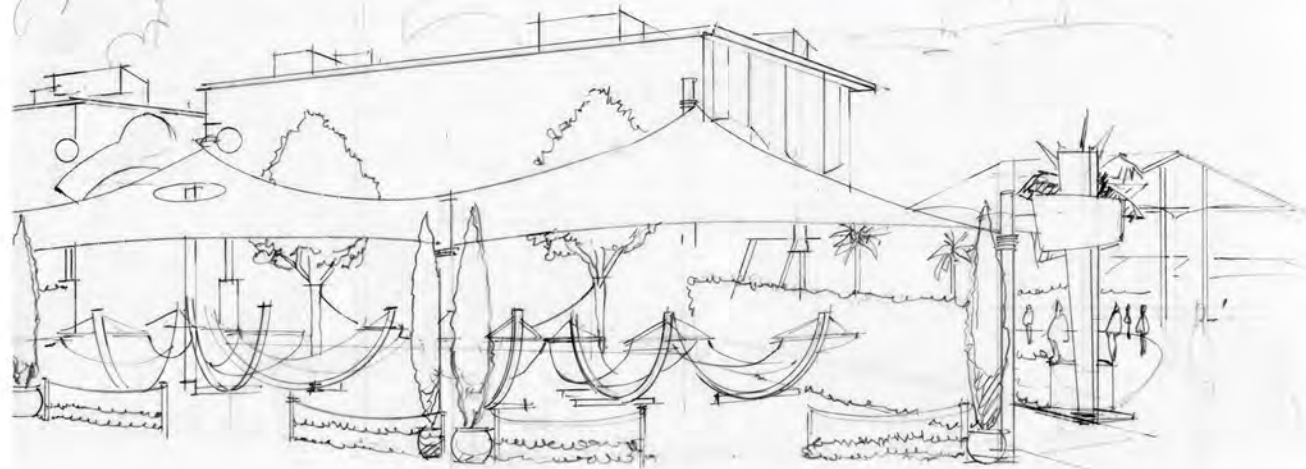
MK

SCALE:

SHEET NUMBER:

**05**





Project

IMPLEMENTATION  
PLANNING

DESIGN  
DEVELOPMENT  
PACKAGE



**Kaser design**

M. Kaser & Associates, Inc.  
217 S. MacArthur Blvd.  
Coppell, Texas 75019  
ph: (469) 549-1832



Submitted:

05 April 2012

**HAMMOCK  
HUT REST  
AREA**

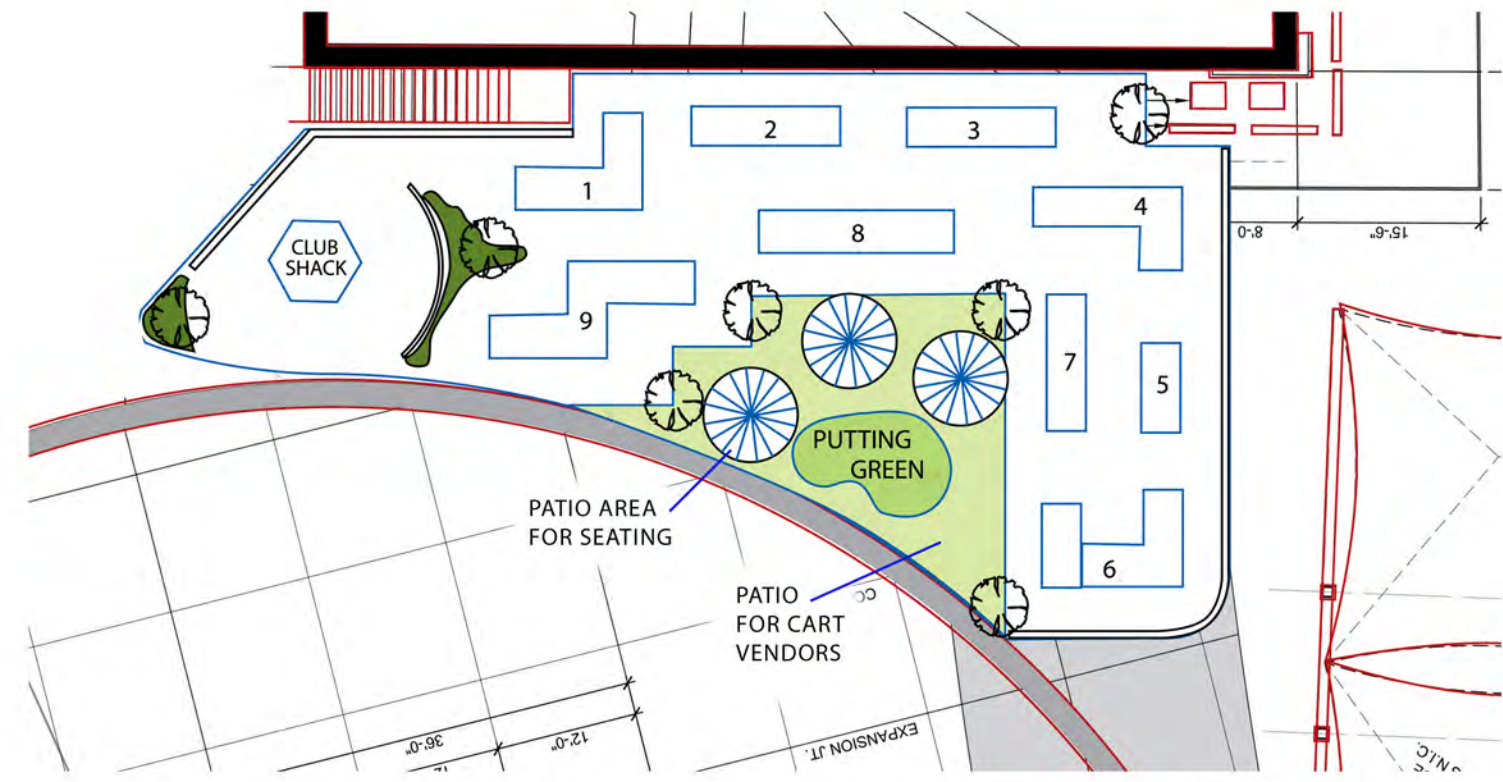
DRAWN BY: \_\_\_\_\_

MK

SCALE: \_\_\_\_\_

SHEET NUMBER: \_\_\_\_\_





COURSE PLAN



IMPLEMENTATION PLANNING

DESIGN DEVELOPMENT PACKAGE

**Kaser design**  
 M. Kaser & Associates, Inc.  
 217 S. MacArthur Blvd.  
 Coppell, Texas 75019  
 ph: (469) 549-1832

Submitted:  
 05 April 2012

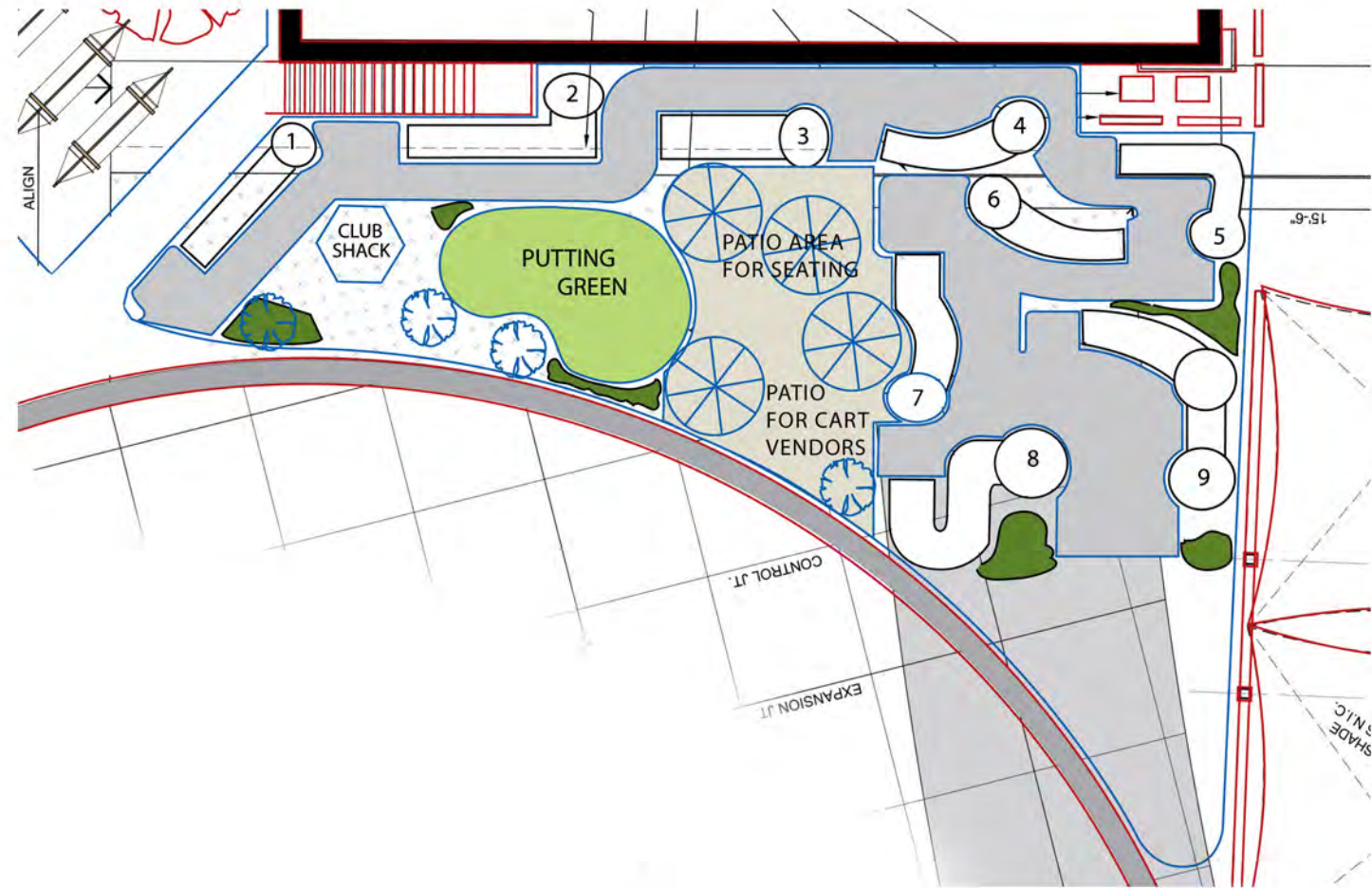
GOLF AREA  
 MINIATURE GOLF STLYE SYSTEM APPROACH

DRAWN BY: MK  
 SCALE:  
 SHEET NUMBER:

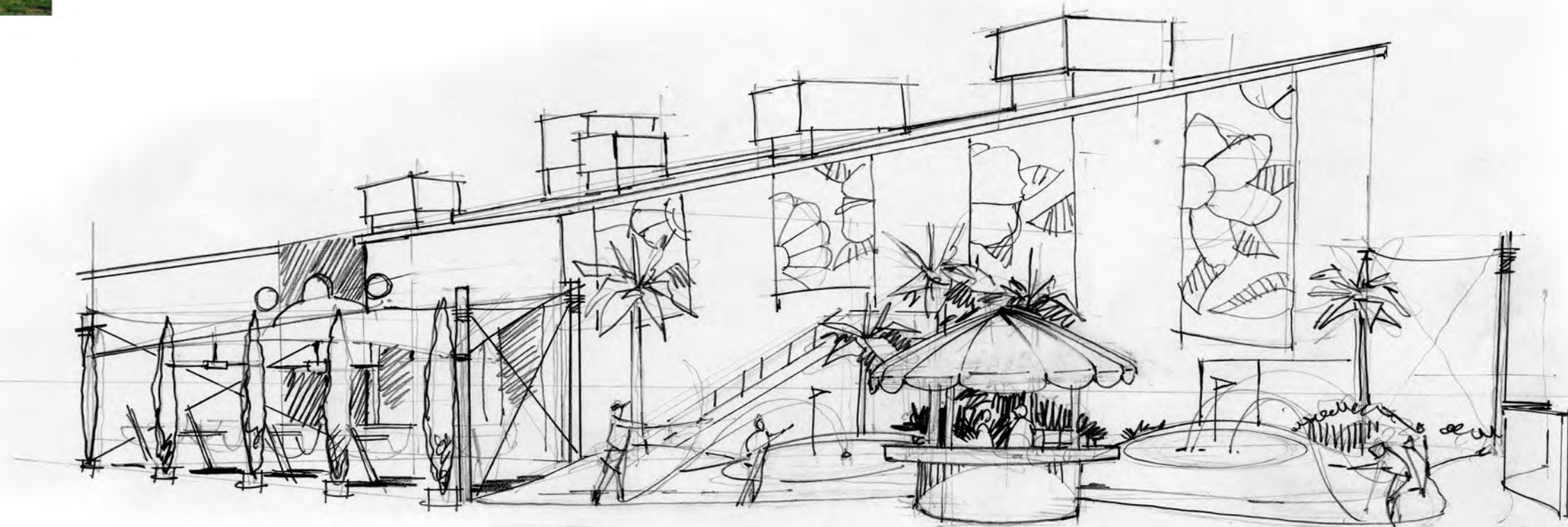
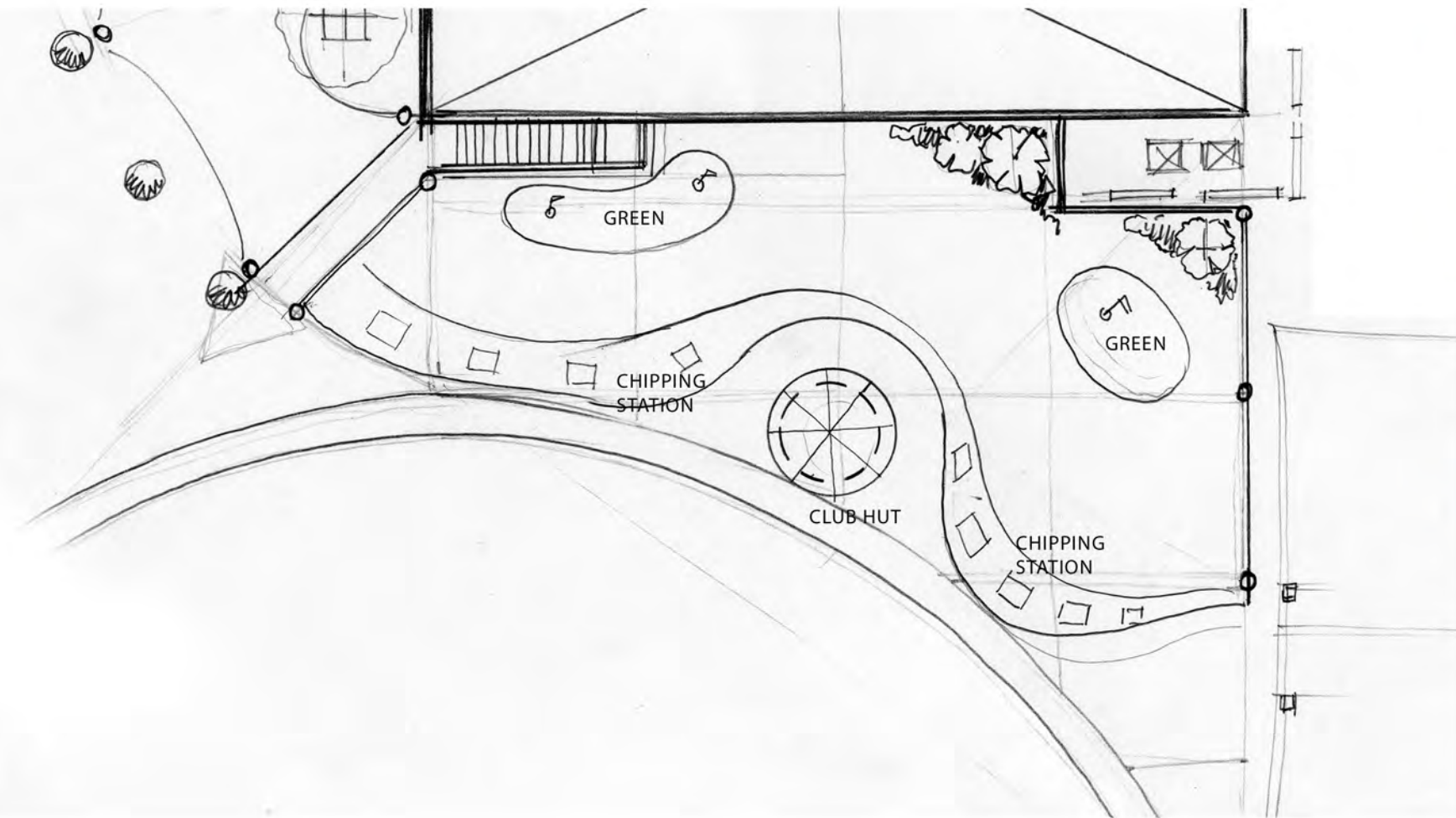




CUSTOM GOLF COURSE DESIGN







Project

**IMPLEMENTATION  
PLANNING**

**DESIGN  
DEVELOPMENT  
PACKAGE**



**Kaser design**

M. Kaser & Associates, Inc.  
217 S. MacArthur Blvd.  
Coppell, Texas 75019  
ph: (469) 549-1832



Submitted:

05 April 2012

**GOLF AREA**

**CHIP & PUTT  
GOLF STLYE  
CUSTOM  
APPROACH**

DRAWN BY:

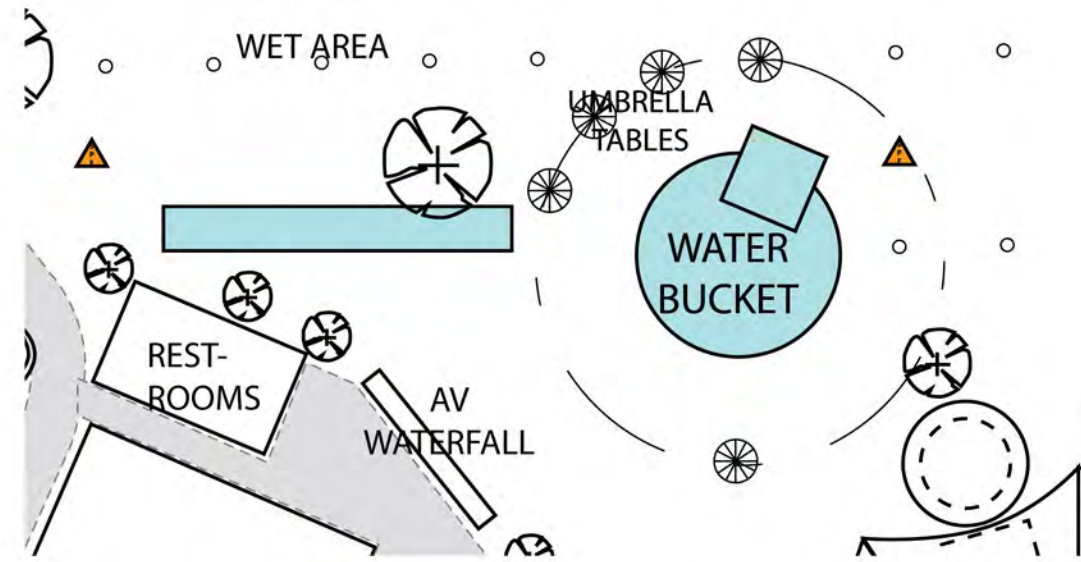
MK

SCALE:

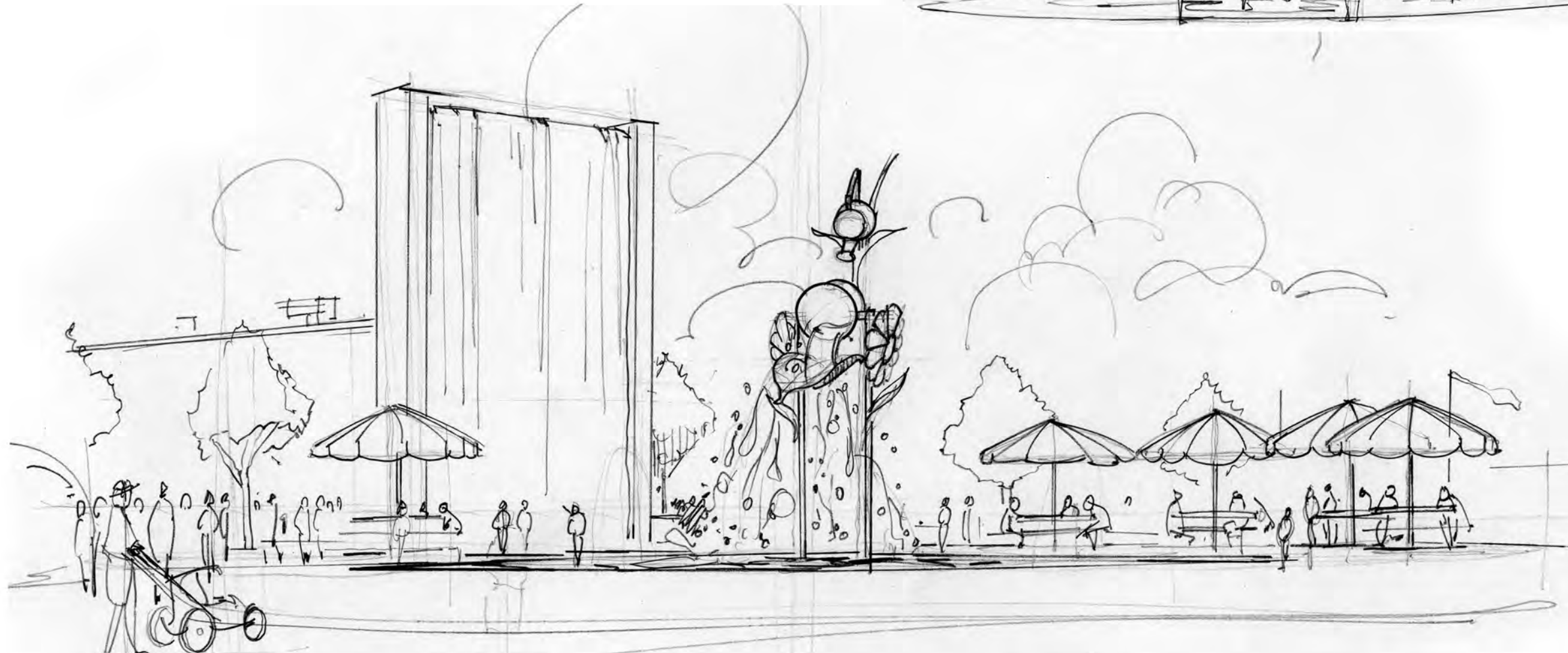
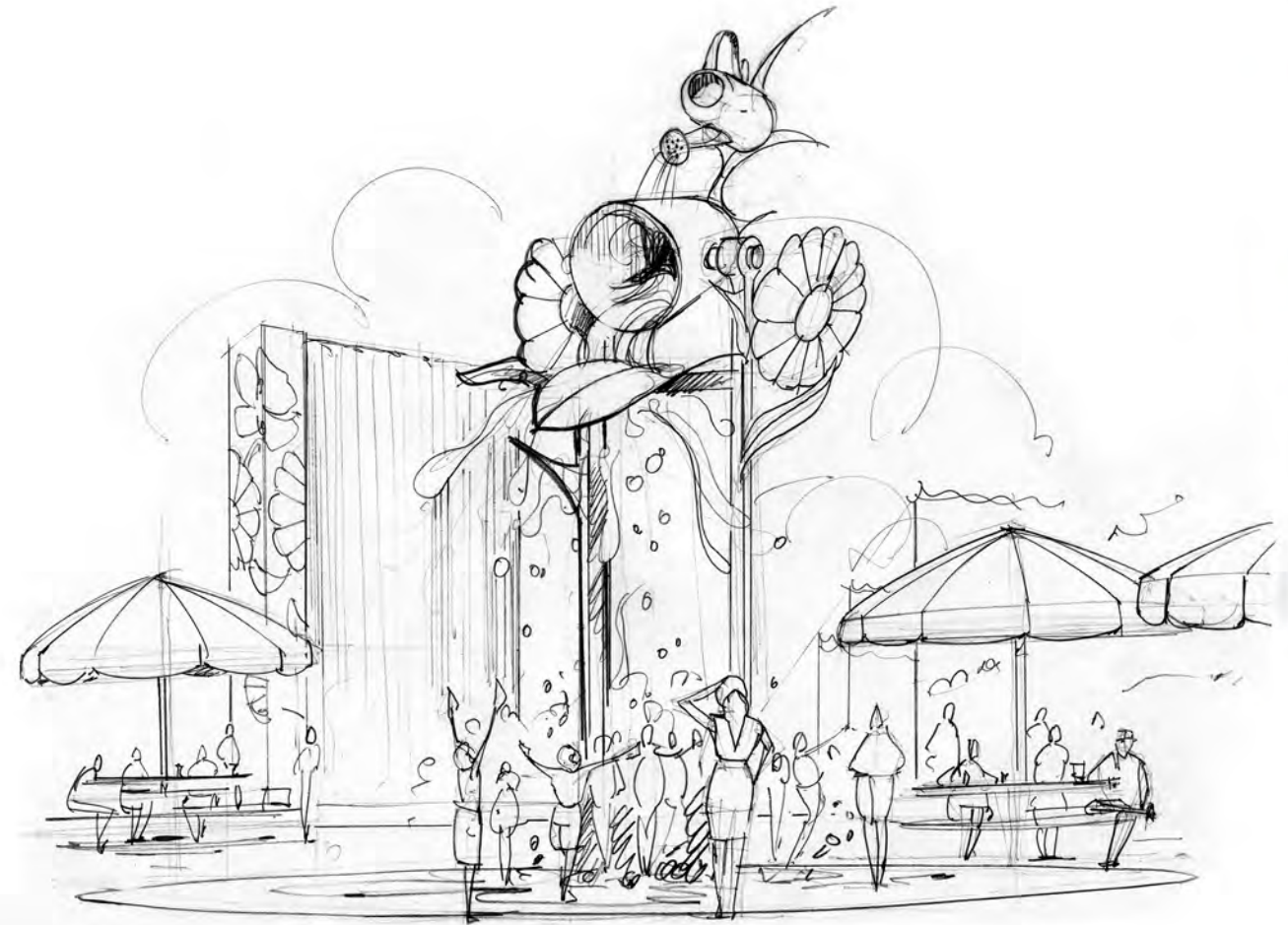
SHEET NUMBER:

**09**





PLAN VIEW



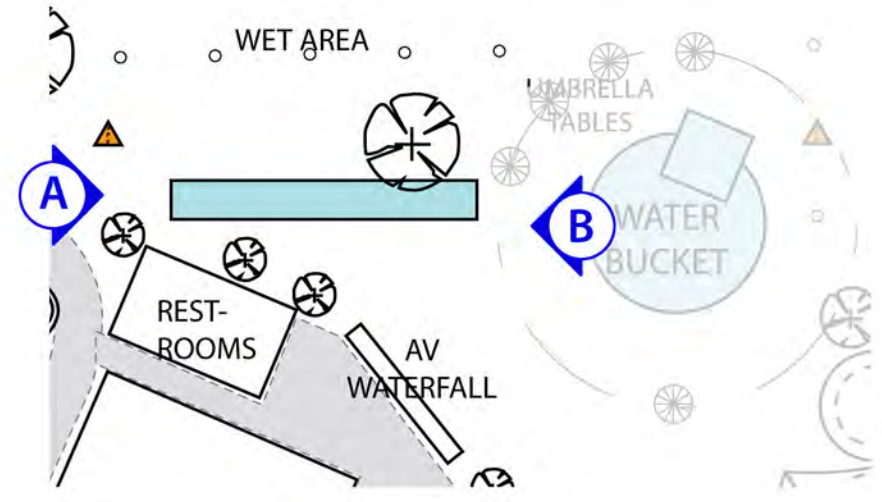
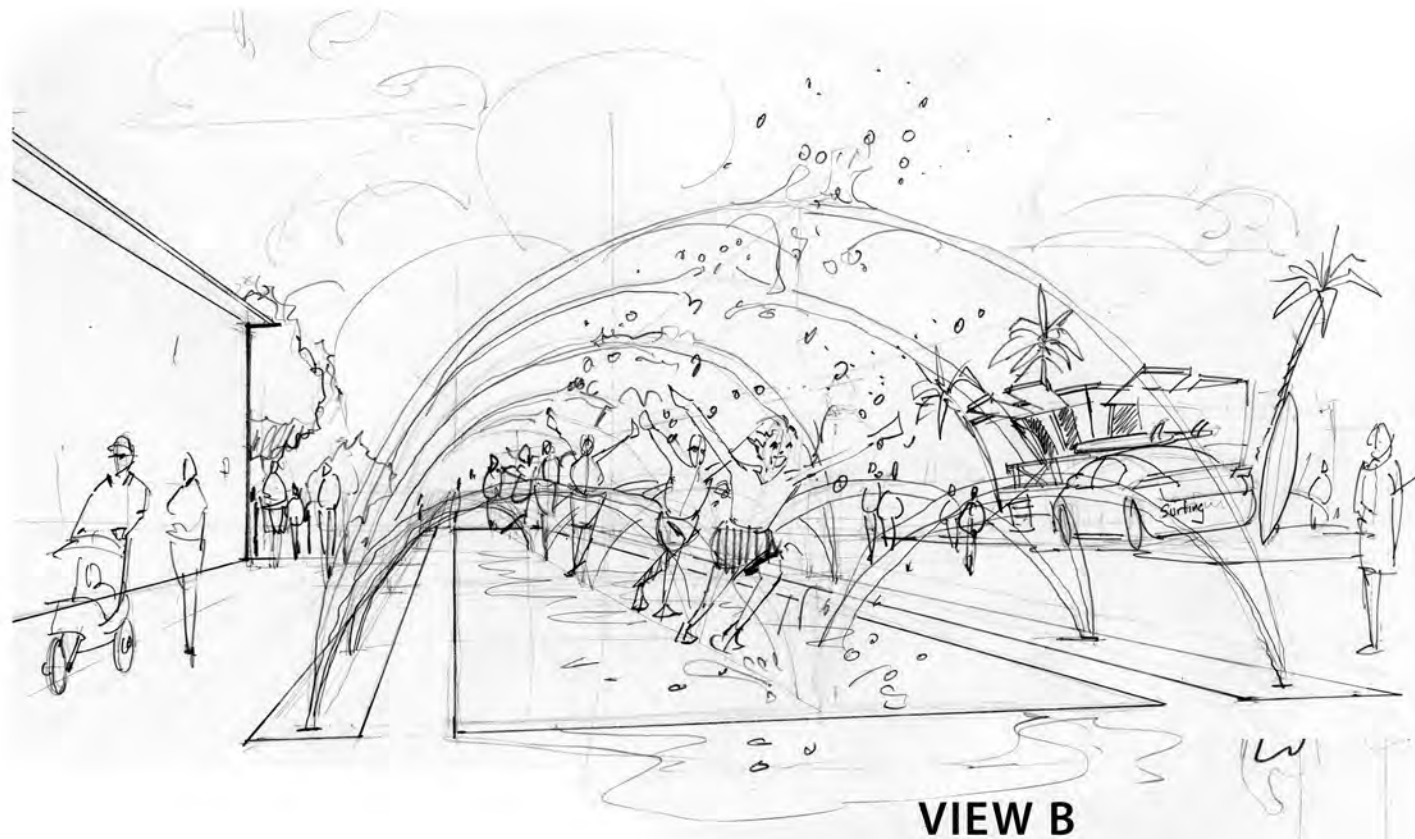
**WATER BUCKET AREA**

DRAWN BY: \_\_\_\_\_  
MK

SCALE: \_\_\_\_\_

SHEET NUMBER: \_\_\_\_\_







# DUNK TANK



Pitchburst combines the soaking fun of a dunk tank with patented, go-anywhere portability. So unique, it's been called "the 21st century dunking booth" for its fun, simple design, versatility and environmental friendliness.

Includes 50 12" balloons.

Pitchburst can easily be enjoyed by people with disabilities, it is like a tankless dunk tank. A balloon is filled with whatever is appropriate (water, slime, confetti etc.). See more ideas for "fillings" below. Then the balloon is placed in the basket above a person sitting in a chair. When the target is hit, the balloon pops over the person. This is perfect for any event OUTSIDE or INSIDE.



Pitchburst Ideas and "Fillings"



Project

IMPLEMENTATION  
PLANNING

DESIGN  
DEVELOPMENT  
PACKAGE



**Kaser design**

M. Kaser & Associates, Inc.  
217 S. MacArthur Blvd.  
Coppell, Texas 75019  
ph: (469) 549-1832



Submitted:

05 April 2012

DUNK  
TANK  
AREA

DRAWN BY:

MK

SCALE:

SHEET NUMBER:

12





Project

IMPLEMENTATION  
PLANNING

DESIGN  
DEVELOPMENT  
PACKAGE



**Kaser design**  
M. Kaser & Associates, Inc.  
217 S. MacArthur Blvd.  
Coppell, Texas 75019  
ph: (469) 549-1832



Submitted:

05 April 2012

ICE CREAM  
BUILDING

STYLE

A

DRAWN BY:

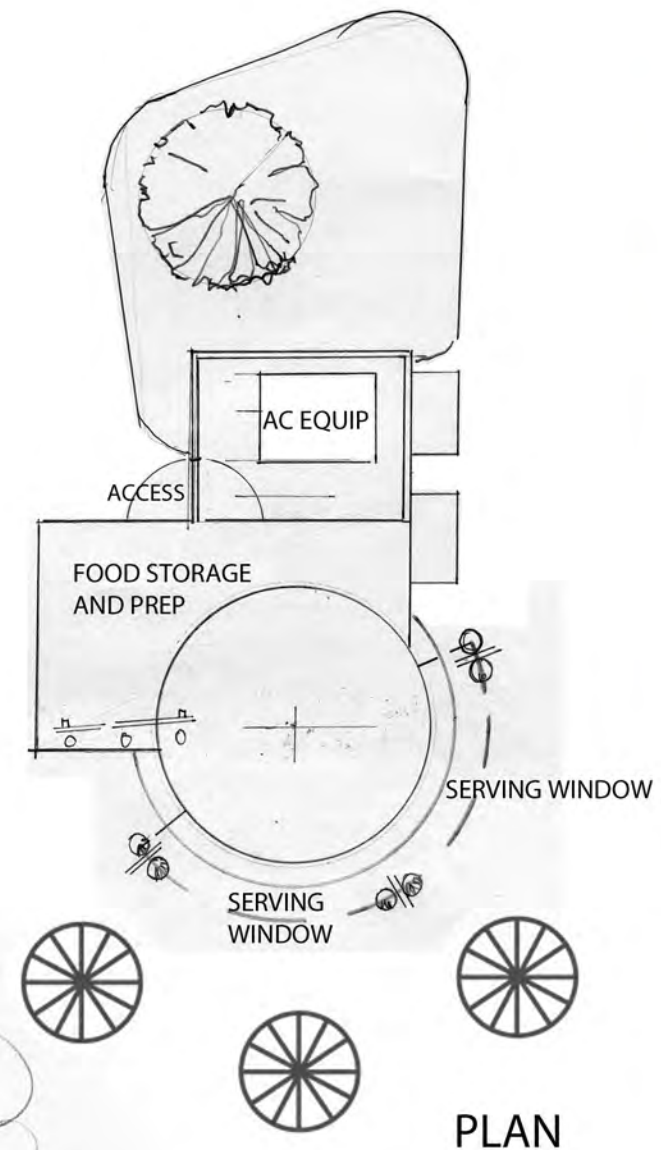
MK

SCALE:

SHEET NUMBER:

13

TEMPORARY BUILDING  
STYLE COMPRISED OF  
BASIC SHAPES. GRAPHIC WRAPS,  
APPLIED AWNINGS  
AND BLADE SIGN  
PROVIDE STYLE TOUCHES







Project

IMPLEMENTATION  
PLANNING

DESIGN  
DEVELOPMENT  
PACKAGE



**Kaser design**  
M. Kaser & Associates, Inc.  
217 S. MacArthur Blvd.  
Coppell, Texas 75019  
ph: (469) 549-1832



Submitted:

05 April 2012

ICE CREAM  
BUILDING

STYLE  
**B**

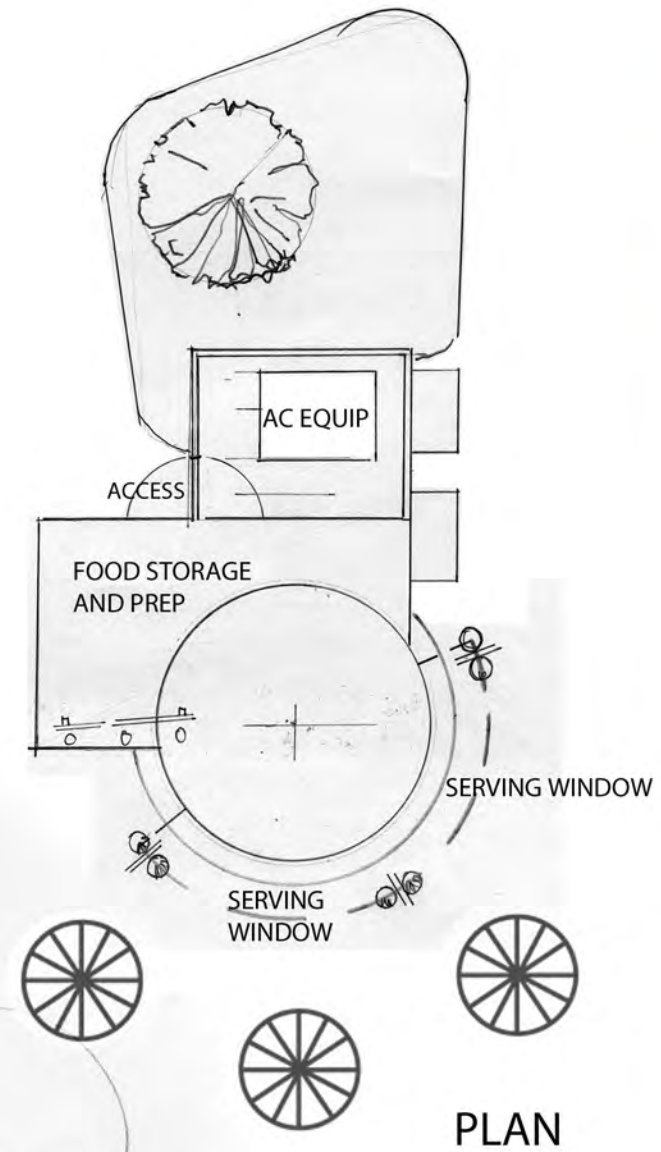
DRAWN BY:  
MK

SCALE:

SHEET NUMBER:

14

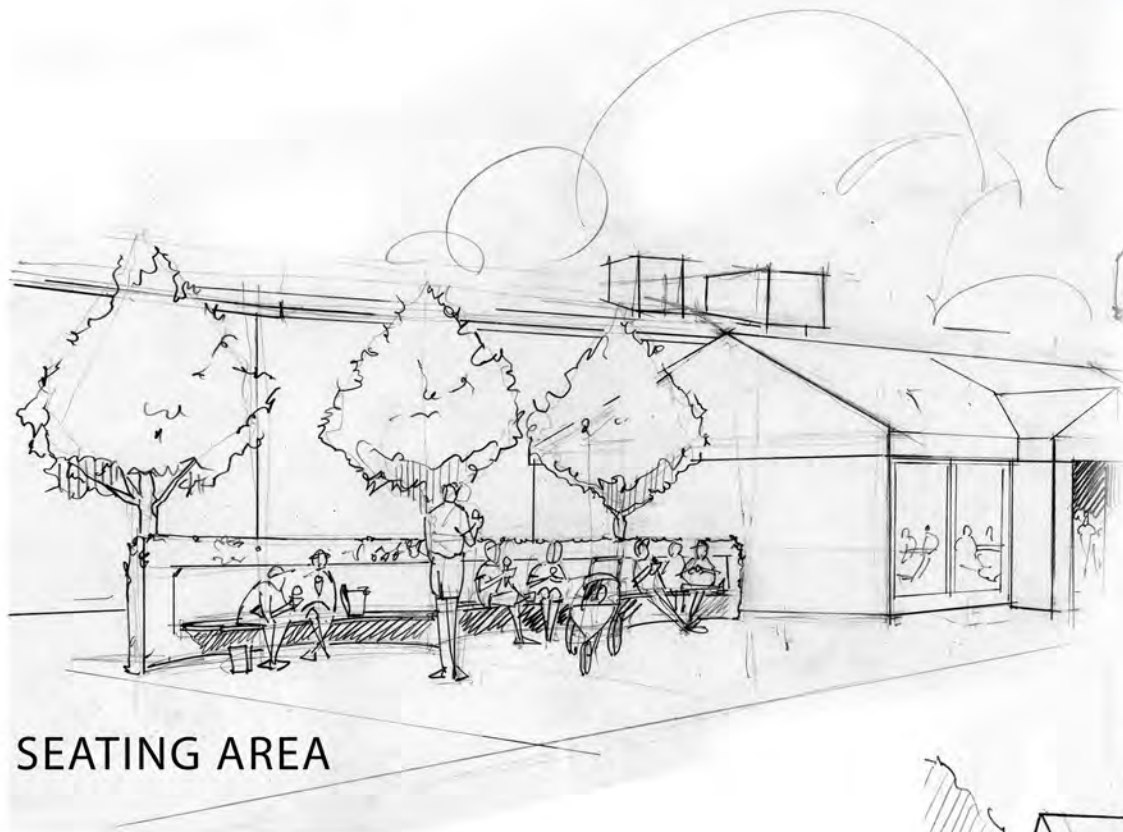
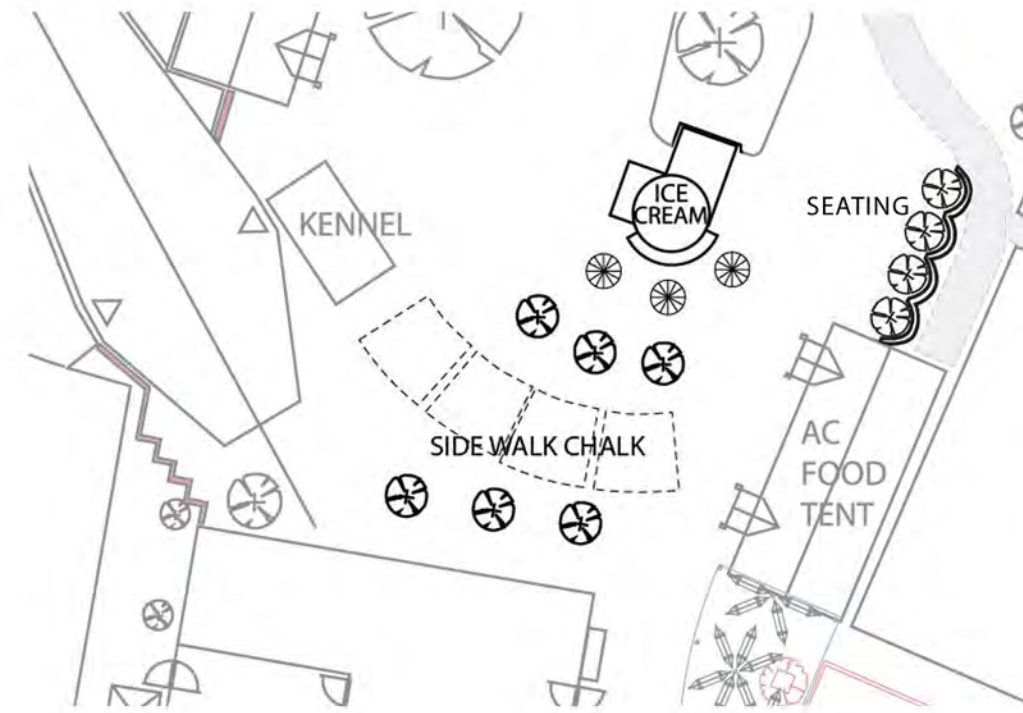
BUILDING STYLE FEATURES  
CANOPY OVERHANG, ICE CONE  
AND TOP, BILLBOARD







SIDEWALK CHALK REFERENCE



SEATING AREA



SIDE WALK CHALK AREA  
VISABLE FROM SURROUNDING  
SEATING AREAS





Project

IMPLEMENTATION  
PLANNING

DESIGN  
DEVELOPMENT  
PACKAGE



**Kaser design**

M. Kaser & Associates, Inc.  
217 S. MacArthur Blvd.  
Coppell, Texas 75019  
ph: (469) 549-1832



Submitted:

05 April 2012

BEACH BLVD  
EAST ENTRY

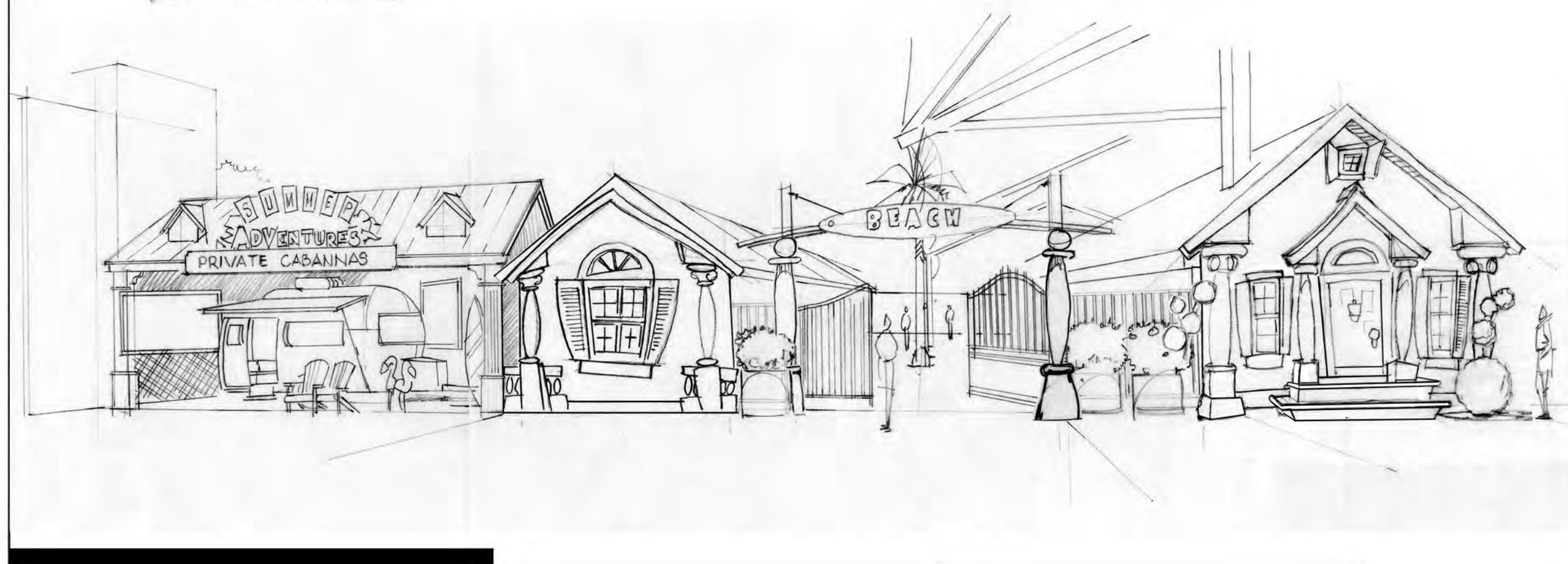
DRAWN BY:

MK

SCALE:

SHEET NUMBER:

16



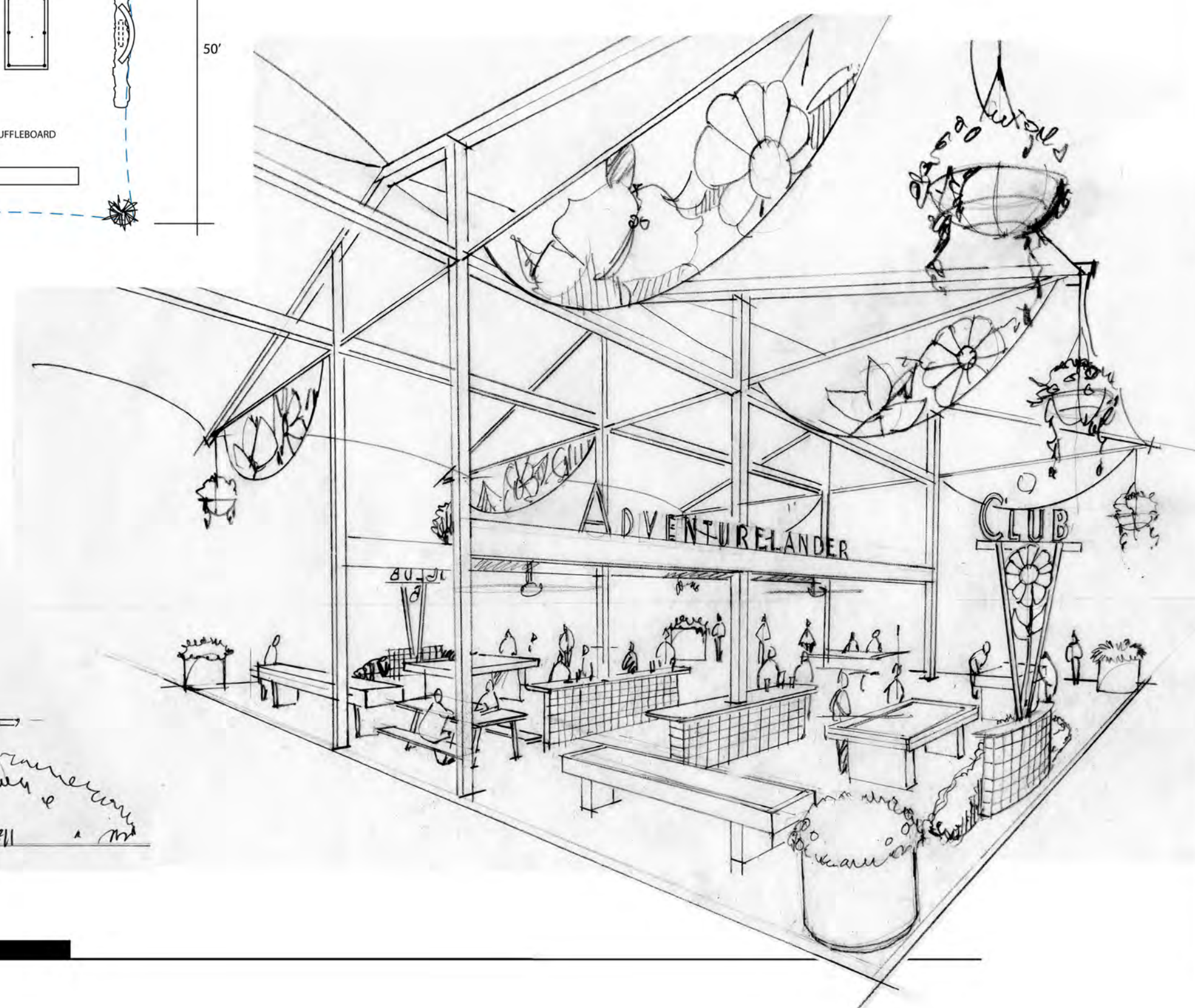
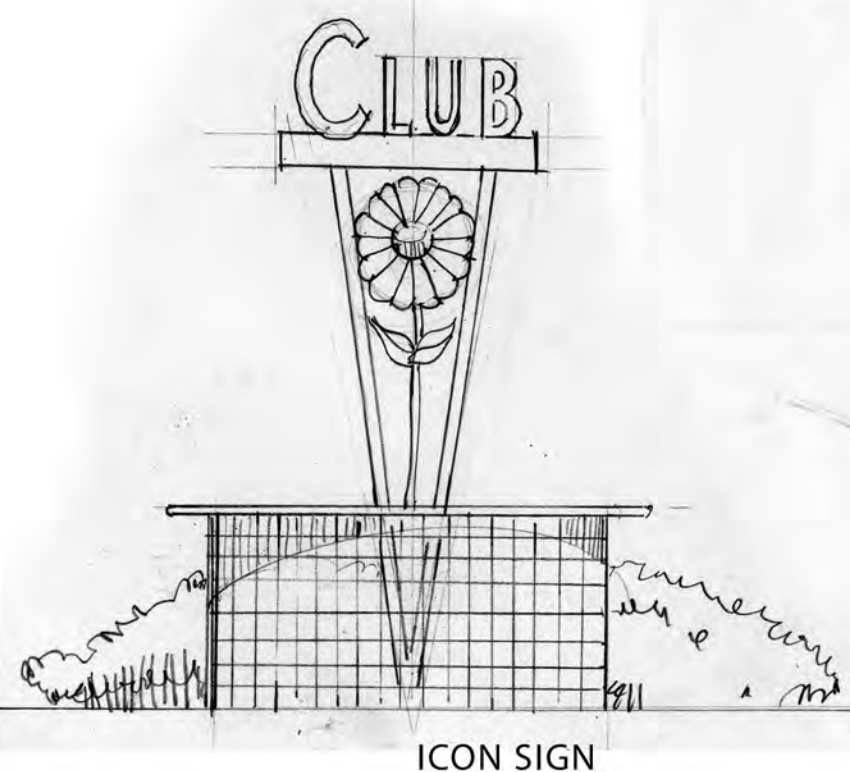
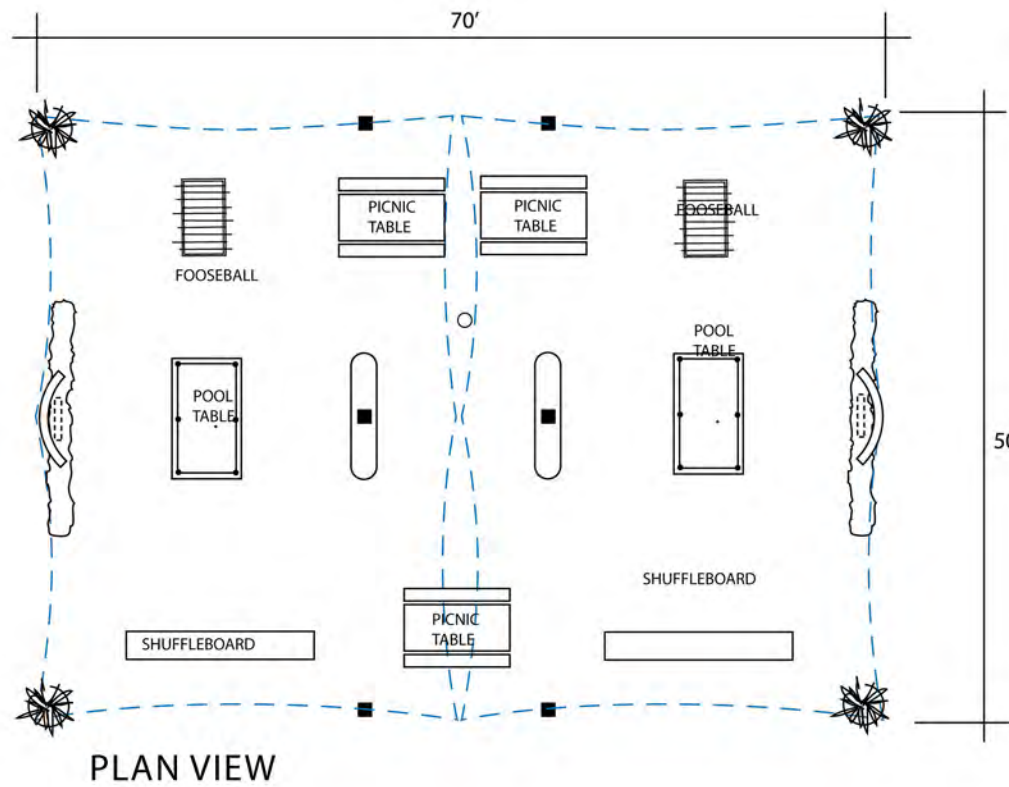




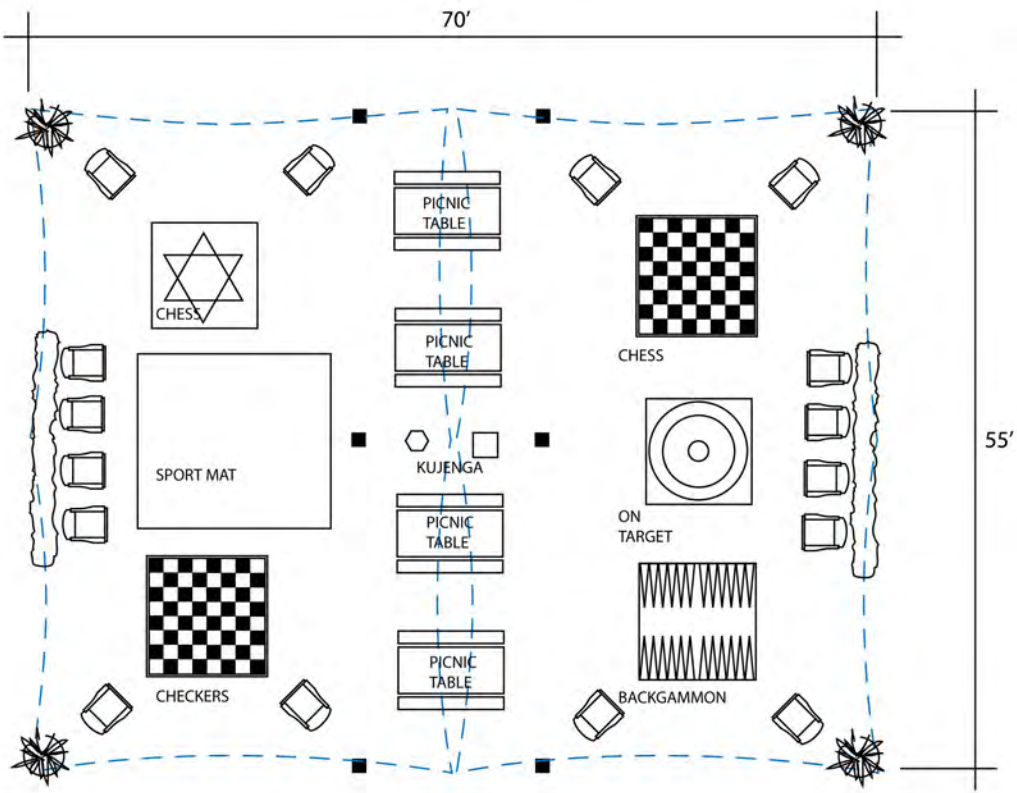




STYLE REFERENCE







PLAN VIEW



**Chess & Checkers Soft Mat Sets**  
 A great way for beginners to learn these games. Plays anywhere.  
**A. Giant Chess** G14619 575.00 00%  
 Queen measures 11"; King measures 12"; Pawn measures 8".  
 Pieces constructed of heavy-duty plastic. Mat sold separately.  
**B. Giant Checkers** G14615 239.00  
 Heavy-duty plastic pieces measure 10" dia. Includes a central  
 movement rod for ease of handling. Mat sold separately.  
**Giant Chess/Checkers Mat** G14611 65.00  
 Heavy-duty vinyl with grommets and pegs for anchoring to the  
 ground. Measures approx. 10' x 10'.

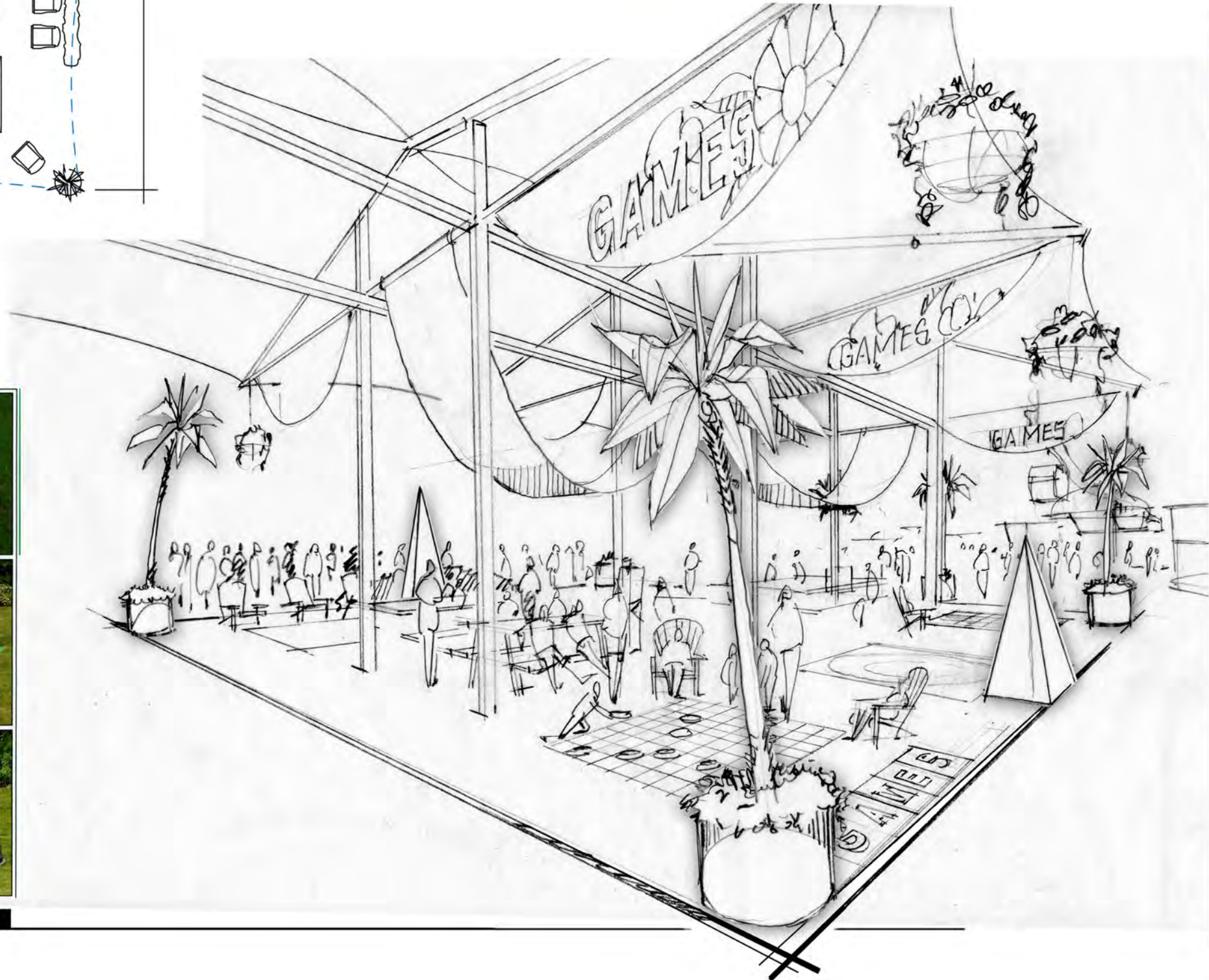
**A. FLAGHOUSE**  
**Giant Chinese Checkers**  
 G15656 119.95  
*Great for the gym or outdoors.*  
 Play like traditional Chinese Checkers, or find variations to the game on our website. Includes 60 soft 6" cone-shaped nylon playing pieces; 10 each in red, green, blue, purple, yellow, and orange; and durable 76" x 76" vinyl mat with colorful board game design.



**B. Giant Ludo** G15986 95.00  
*Fun game for up to 16 players*  
 In this oversized tactical game, the goal is to be the first player or team to move all your players around the board and reach the center known as "HOME." Includes 1 giant 10' x 10' playing mat, 8 pegs for securing mat to ground in outdoor play, 2 large 16" inflatable dice, and 16 colored foam playing counters (4 each in red, blue, green, and yellow).



**C. On Target™** G15984 72.95  
*A challenging variation on regular flying disk games.*  
 Participants aim discs at a multi-colored target mat. Each color on the mat represents a different number of points. The player with the most points at the end of the game wins! Includes 1 giant 10' x 10' vinyl mat, pegs for securing mat to ground for outdoor play, and 3 durable plastic disks.

Submitted:

05 April 2012

GIANT GAME AREA

DRAWN BY: MK

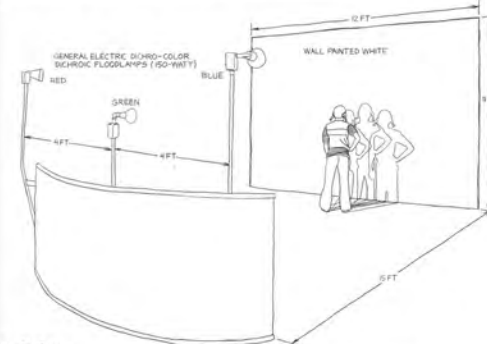
SCALE:

SHEET NUMBER:



**Colored Shadows**

Recipe No. 28



**Description**

This exhibit demonstrates very directly that white light can be formed from a mixture made up of equal parts red, blue, and green light. We are used to mixing colored pigments, but the opportunity to mix colored lights is less common. Mixing light generates some pleasant surprises. For example, you can see that yellow light can be made by adding red and green.

This exhibit consists of three pure sources of light in the primary colors (red, blue, and green), shining on a white wall. The intensities of the three colors are balanced so that the wall looks white. The lamps are placed a few feet apart, so that when a visitor stands close to the lamps, his or her body blocks the light from only one of the lamps. Whenever only one light is blocked, the other two lights will mix to make a colored shadow. Consider, for example, the shadow cast when a visitor's body blocks light from the red lamp. The blue light and the green light mix to create a cyan-colored

shadow. Cyan is the complementary color to red—that is, the color that mixes with red to make white. When a shadow removes one color from white it leaves the complementary color. By blocking each of the three lights, visitors cast shadows of three distinct colors: cyan (a mixture of blue and green), magenta (a mixture of red and blue), and yellow (a mixture of red and green).

As the visitor moves toward the wall, the shadows begin to overlap. In the area where two shadows overlap, two lights are blocked by the visitor's body. The remaining light illuminates the area, making a red, green, or blue shadow. If shadows from all three lamps overlap, the overlapping area has no color; it is black. So, when a person passes the wall at the right distance, they see quite an array of colors (three primaries, three complements, white, and black) arranged as three overlapping shadows.



**IMPLEMENTATION  
PLANNING**

**DESIGN  
DEVELOPMENT  
PACKAGE**



**Kaser design**  
M. Kaser & Associates, Inc.  
217 S. MacArthur Blvd.  
Coppell, Texas 75019  
ph: (469) 549-1832

Submitted:

05 April 2012

**CROOKED  
HOUSE  
INTERIOR  
CONCEPTS**

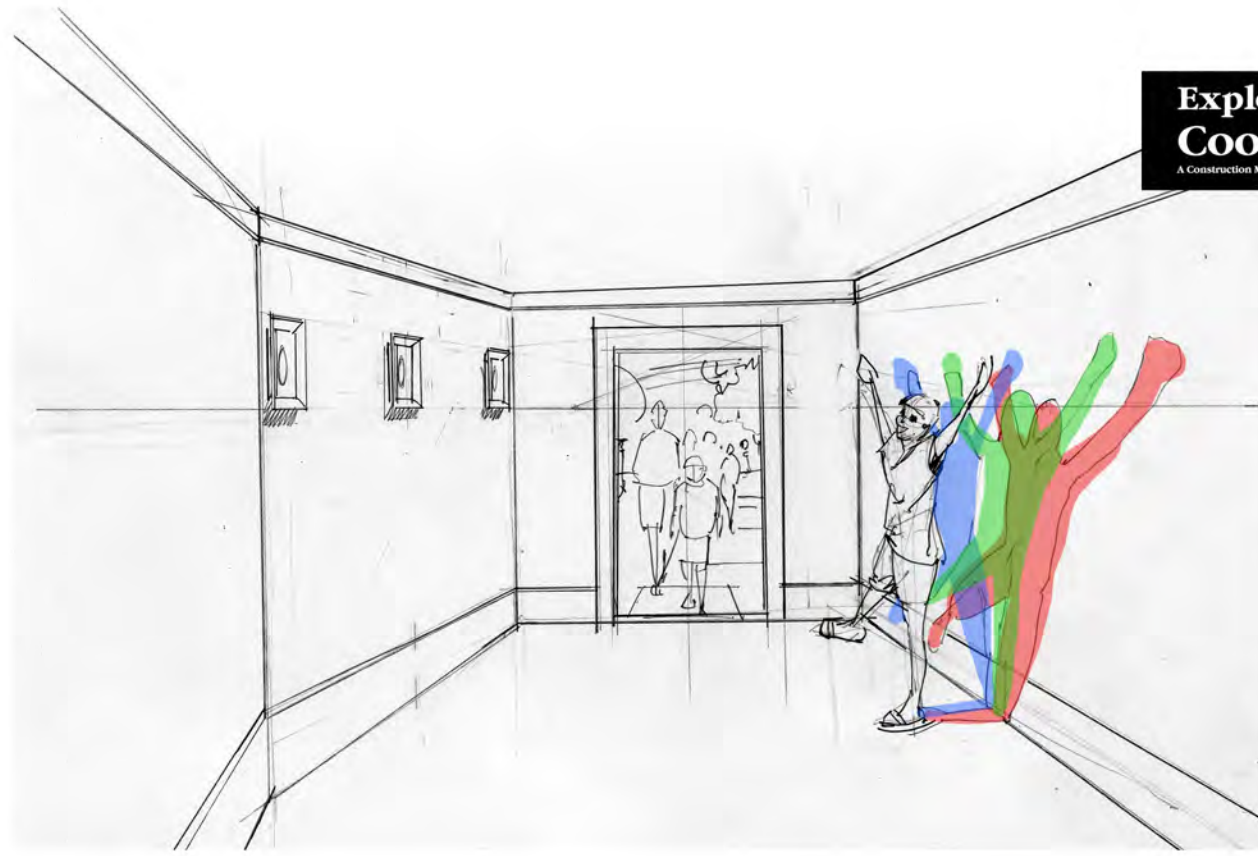
DRAWN BY:

MK

SCALE:

SHEET NUMBER:

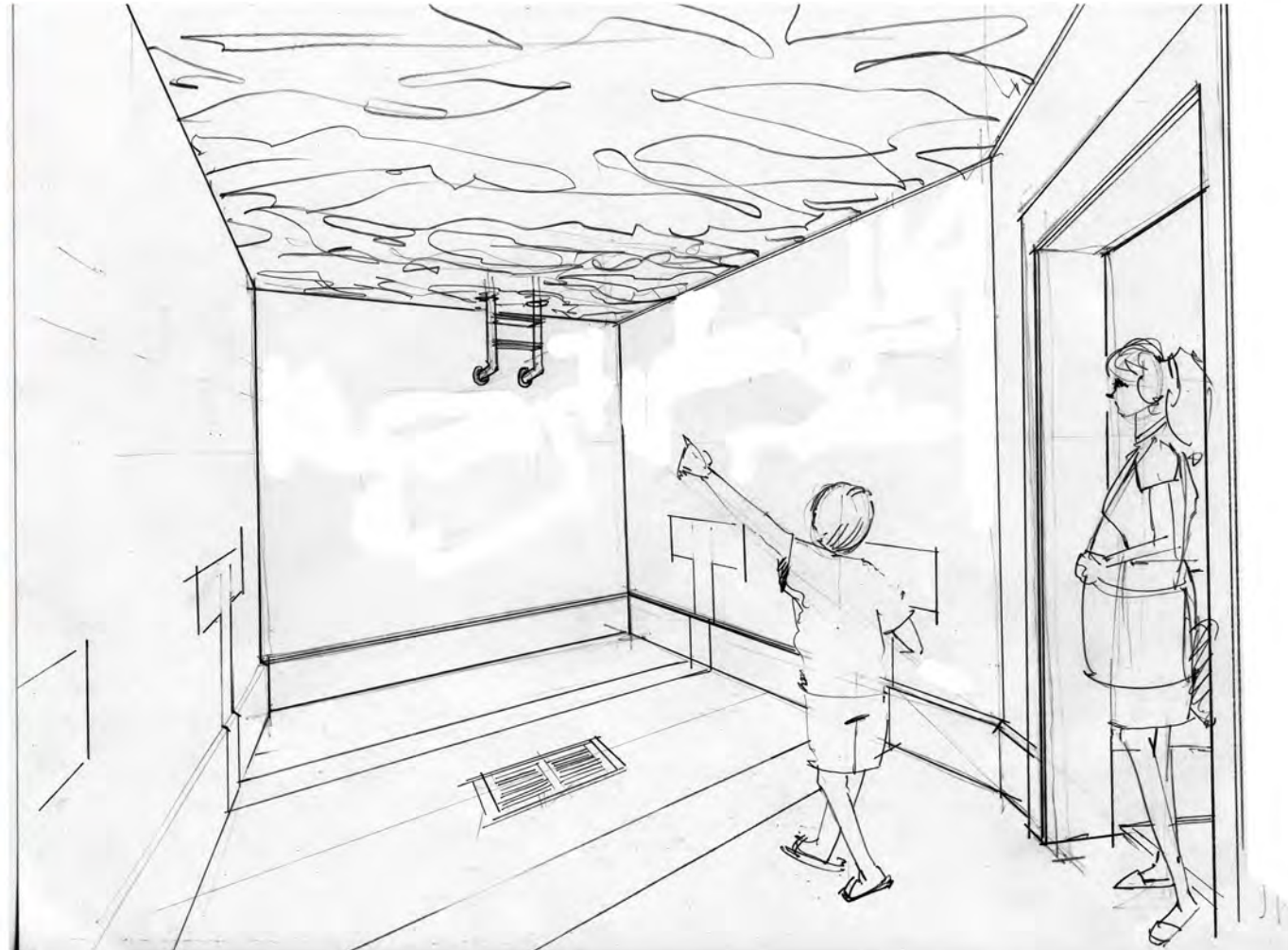
**20**



INTERIOR TO ALSO INCLUDE AN  
AUDIO EFFECT OF ECHO  
UNDERWATER SOUNDS



REFERENCE IMAGES OF SIMILAR INTERIOR



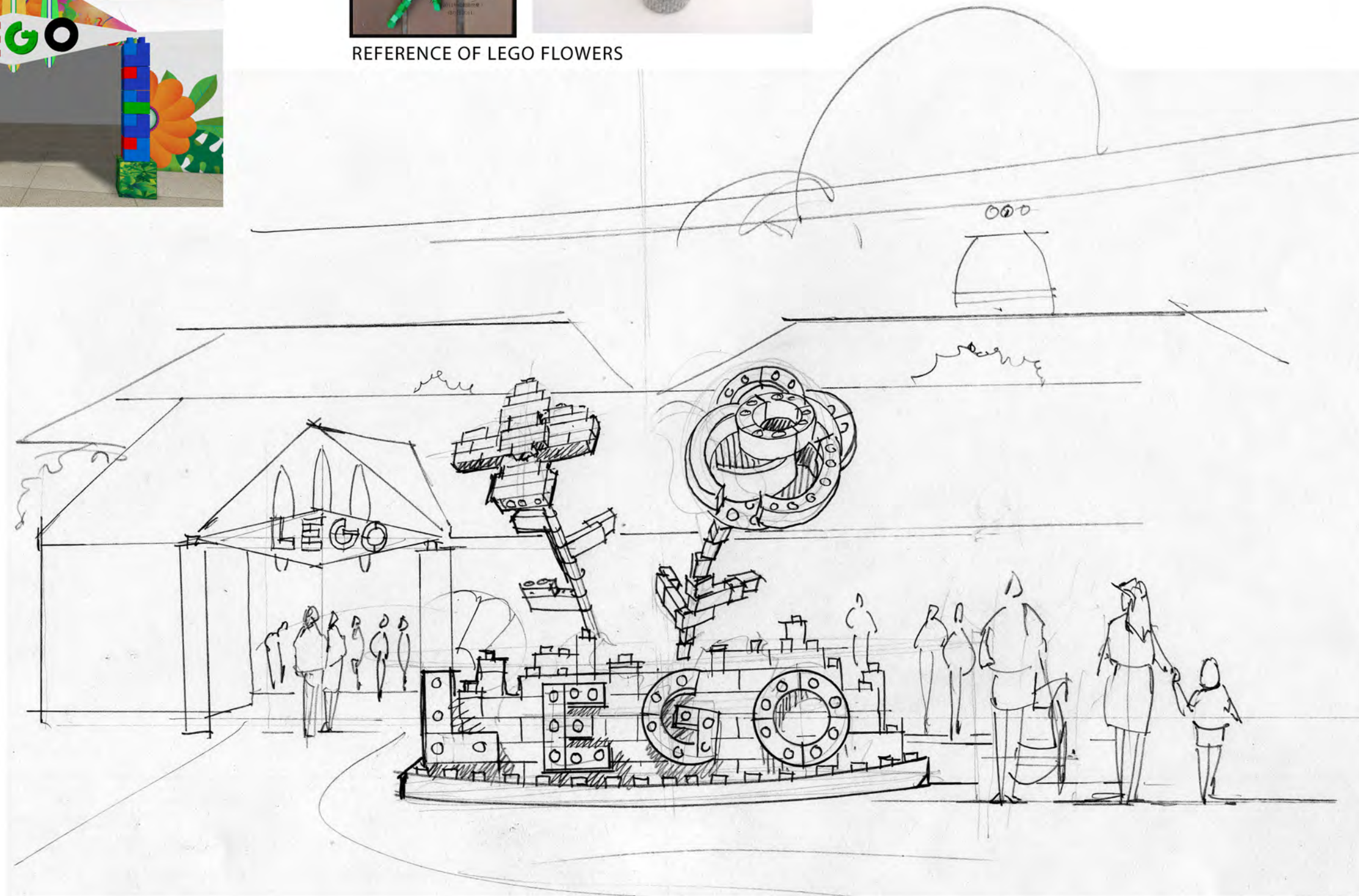








REFERENCE OF LEGO FLOWERS







Project

IMPLEMENTATION  
PLANNING

DESIGN  
DEVELOPMENT  
PACKAGE



**Kaser design**  
M. Kaser & Associates, Inc.  
217 S. MacArthur Blvd.  
Coppell, Texas 75019  
ph: (469) 549-1832



Submitted:

05 April 2012

SUNSCREEN  
LOTION  
STATION

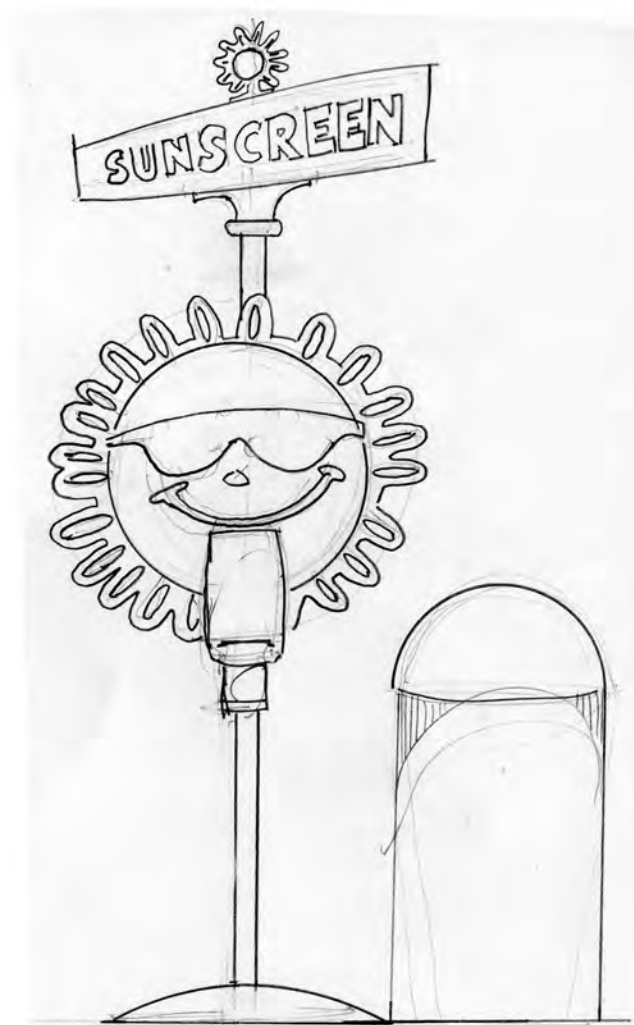
DRAWN BY:

MK

SCALE:

SHEET NUMBER:

23







**Kaser design**  
M. Kaser & Associates, Inc.  
217 S. MacArthur Blvd.  
Coppell, Texas 75019  
ph: (469) 549-1832



Submitted:

05 April 2012

**BARRIER  
GRAPHICS**

DRAWN BY:

MK

SCALE:

SHEET NUMBER:







Project

IMPLEMENTATION  
PLANNING

DESIGN  
DEVELOPMENT  
PACKAGE



**Kaser design**

M. Kaser & Associates, Inc.  
217 S. MacArthur Blvd.  
Coppell, Texas 75019  
ph: (469) 549-1832



*Submitted:*

05 April 2012

NOTES

DRAWN BY: \_\_\_\_\_

MK

SCALE: \_\_\_\_\_

SHEET NUMBER: \_\_\_\_\_

25